

Human IgG1 (K214R;D356E;L358M) Isotype Control(Anti-HEL)

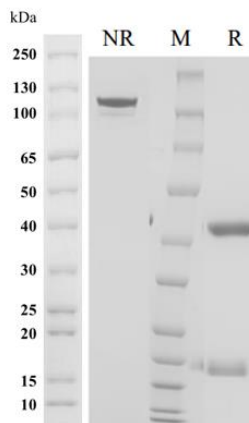
Product Information

Product Name	Human IgG1 (K214R;D356E;L358M) Isotype Control(Anti-HEL)
Storage temp.	Store at 2-8°C short term (1-2 weeks).Store at $\leq -20^{\circ}\text{C}$ long term. Avoid repeated freeze-thaw.
Catalog# / Size	GM-87853AB-1mg / 1 mg GM-87853AB-5mg / 5 mg * 5 vials GM-87853AB-25mg / 25 mg GM-87853AB-50mg / 50 mg GM-87853AB-100mg / 50 mg * 2 vials

Antibody Information

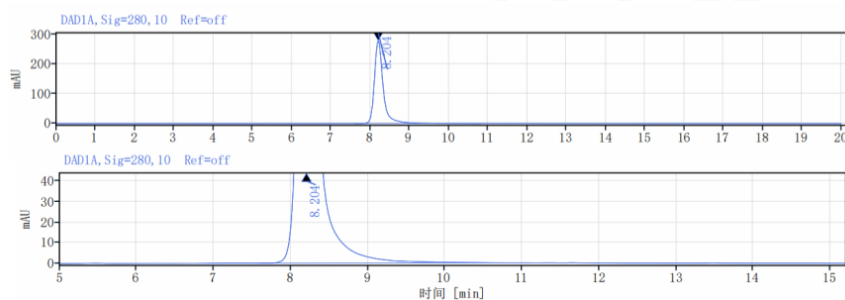
Expression System	CHO
Aggregation	< 5% as determined by SEC-HPLC
Purity	> 95% as determined by SDS-PAGE
Endotoxin	<1 EU/mg, determined by LAL gel clotting assay
Sterility	0.22 μm Filtered
Target	HEL
Clone	/
Alternative Names	/
Source/Isotype	Monoclonal Human IgG1 (K214R; D356E; L358M), kappa
Description	A homologous control antibody is an antibody that is used to control the target antibody in an experiment. The homologous control antibody should have the same immunoglobulin type and concentration as the test antibody, but not have the same specificity as the target antibody. It is often used to help researchers distinguish between non-specific signals and background signals in experiments to ensure the accuracy and reliability of experimental results.
Formulation	PBS, pH 7.2-7.4, Contains no stabilizers or preservatives

SDS-PAGE



On SDS-PAGE under reducing (R)/non-reducing(N-R) condition. The gel was stained overnight with Coomassie Blue. The purity of the protein is greater than 95%.

SEC-HPLC



The purity of this product is more than 95% verified by SEC-HPLC.